

## WARNING

Buyer/User assumes all responsibility for safety and proper use not in accordance with the directions and safety labels.



# ViaAqua<sup>®</sup> Pond Pump

- Compact and user friendly design
- Easy to install and maintain
- Encapsulated pre-filter with base
- Fountain head kits included
- Energy efficient
- 16 ft. grounded cord
- For freshwater environments

### Water Bell Head

For model:  
BH-1000AD  
BH-2000AD



### Two Tier Head

For model:  
BH-1000AD



### Three Tier Head

For model:  
BH-1000AD  
BH-2000AD



## POND PUMP

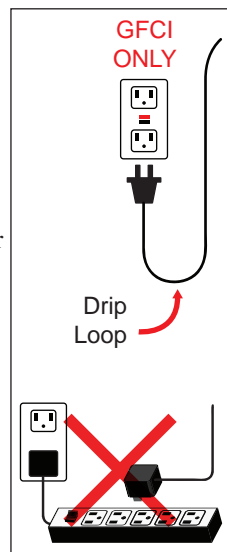
ViaAqua® Pond Pump is a high performance garden water pump that is ideal for ponds, large fountains, waterfalls, streams and external filtration. The ViaAqua® Pond Pump uses a large debris strainer that fully encapsulates the pump to prevent water flow blockage. The sophisticated design makes installation and maintenance easy. ViaAqua® Pond Pump includes complete fountain head kits and attachments to operate the pump submersibly.

### WARNING AND SAFEGUARD

#### WARNING

- » This product may contain chemicals known to the State of California to cause cancer and/or birth defects or other reproductive harm. Wash you hand after handling the product.
- » It is your sole responsibility to verify that the plug and receptacle are clean/free of moisture and salt build up at all times. The receptacle must be free of water, salt, calcium, and magnesium. Failure to do so may cause fire and/or loss of life.
- » Do not plug into an extension cord or power strip.
- » A drip loop must be used when plug into any electrical devices. A drip loop is part of the cord hanging below the receptacle.
- » The national code requires all aquarium equipment to be plugged into a G.F.C.I. (Ground Fault Circuit Interrupter) electrical outlet. If you do not have a G.F.C.I., have an electrician install one prior to operating any aquarium components.

1. Read and follow all the safeguards, warning and safety guidelines.
2. Use this product for its intended use only.
3. Do not operate ViaAqua® Pond Pump without being submersed in water at all times. Failure to do so cause permanent damage to the pump.
4. Prior to maintenance on any electrical aquarium appliance or aquarium, you must disconnect all electrical aquarium devices.
5. Never operate a ViaAqua® Pond Pump with an electronic wavemaker or on/off timing device. Such devices will cause permanent damage to the pump and/or demagnetize the impeller.
6. Routine maintenance is required to ensure the maximum erformance and the longevity of the ViaAqua® Pond Pump. See maintenance guidelines.
7. The use of a surge suppressor is strongly recommended.
8. Verify that the pump size fits the application without dramatically restricting the water flow. Consult with your local dealer or manufacture's guidelines for the size pump needed for you specific application.
9. Do not reduce the input or output diameter of the pump.
10. Do not reduce the intake or output tubing size.
11. You must incorporate the pre-filter when operation is for water circulation, waterfalls, ponds and fountains.

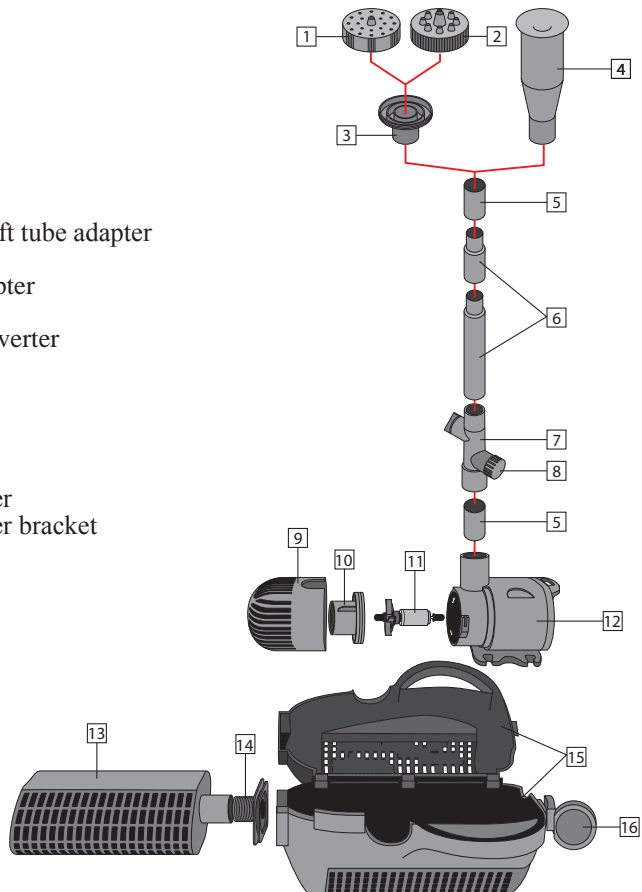


12. Replace the impeller if there are any signs of damage or excess wear.
13. Failure to maintain the ViaAqua® Pond Pump will cause permanent damage to the impeller and/or pump. Routine maintenance is of the utmost importance to keep your pump working well.
14. Never yank/pull the pump by the cord. Failure to do so will cause the pump to fail prematurely and/or cause electrical shock.
15. Frequent cleaning of the pre-filter and pump are required due to the extreme conditions of the pond. If the intake of the pump is clogged and is not remedied on time, it will cause the pump to fail prematurely.
16. When operating a ViaAqua® Pond Pump inside a pond or a fountain, a large pre-filter must be used. Failure to use pre-filter will cause damage to the impeller and/or pump.
17. Since there are many brand of filtration systems, please refer to particular manufacture instructions for installation and maintenance guidelines.
18. The diverter valve enables water flow to be directed for either a water features, a Terminator™ UVC Sterilizer, or a pond filter.

## PART LIST

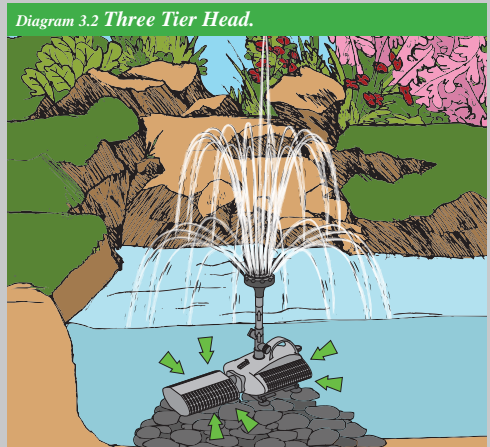
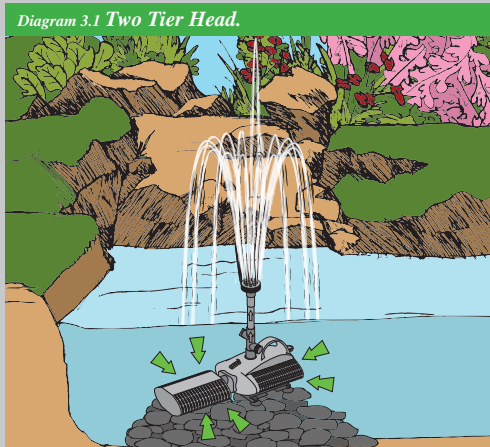
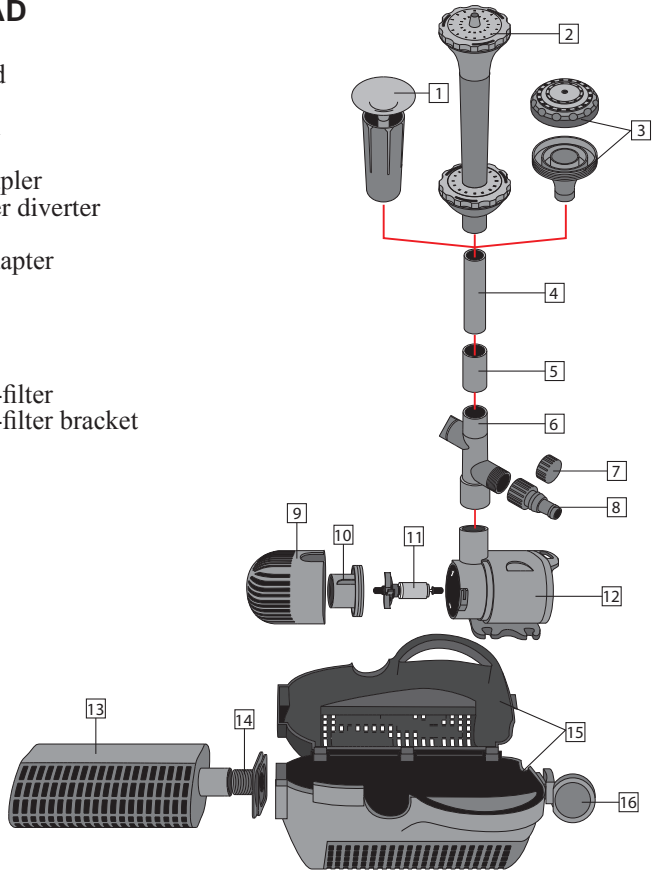
### MODEL: BH-1000AD

1. Three tier head
2. Two tier head
3. Fountain head uplift tube adapter
4. Water bell head
5. Fountain head adapter
6. Uplift tubes
7. Valve and water diverter
8. Diverter cap
9. Pump strainer
10. Impeller cover
11. Impeller
12. Pump
13. Additional pre-filter
14. Additional pre-filter bracket
15. Main pre-filter
16. Clasp



# MODEL: BH-2000AD

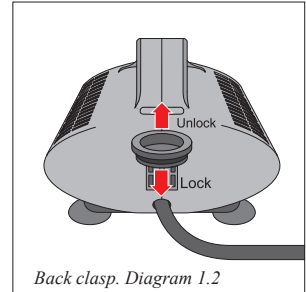
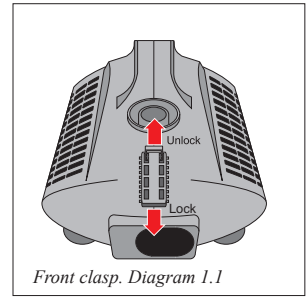
1. Water bell head
2. Dual tier head
3. Three tier head
4. Uplift tube
5. Uplift tube coupler
6. Valve and water diverter
7. Diverter cap
8. Barbed pipe adapter
9. Pump strainer
10. Impeller cover
11. Impeller
12. Pump
13. Additional pre-filter
14. Additional pre-filter bracket
15. Main pre-filter
16. Clasp



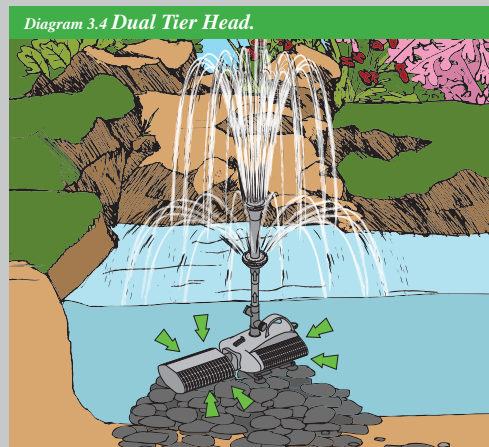
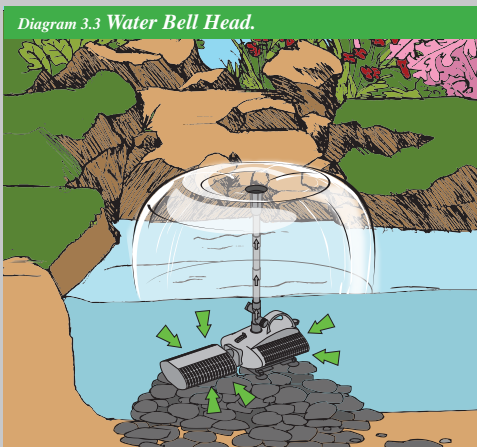
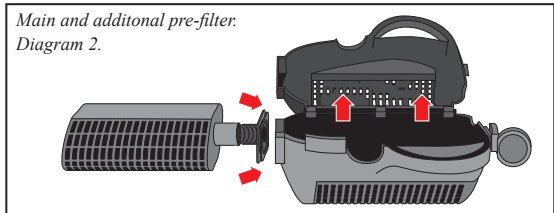
## INSTALLATION SETUP

### INTERNAL OPERATION: FOUNTAIN HEAD

1. Open both, front and back clasps. See diagrams 1.1 and 1.2.
2. Now, open the main pre-filter.
3. Connect the additional pre-filter to the main pre-filter. See diagram 2.
4. Close the main pre-filter.
5. Close and secure both clasps.
6. See part list diagrams for model BH-1000AD and BH-2000AD fountain head installation.
7. Diagram 3 shows different options of the fountain head.
8. Place the pump in desired location.  
If pump is placed in a pond, raise the pump off the bottom of the pond by a minimum of 6 inches.
9. Start the ViaAqua® Pond Pump.



**Note:** The diverter valve enables water flow to be directed to either a water feature, a Terminator™ UVC Sterilizer, or a pond filter.



Item no.	Gallons per hour	Max. Head	Wattage	UPC #0069037
BH1000 AD	342 GPH	3.93 ft.	7.5 watt	2941 3
BH2000 AD	600 GPH	4.92 ft.	20 watt	2942 0
BH4000 AD	1105 GPH	8.53 ft.	46 watt	TBA
BH6000 AD	1579 GPH	10.17 ft.	74 watt	TBA

Part List	Replacement Parts	Model	UPC #0069037
1-8	Fountain head kits-small	BH-1000AD	2586 6
1-8	Fountain head kits-medium	BH-2000AD	2587 3
11	Impeller	All models	TBA

## MAINTENANCE

**If the water flow decreases, it's a clear sign that debris is in the impeller or the pre-filter is clogged. It is the hobbyist's sole responsibility to ensure the pump is maintained frequently. Failure to properly maintain the pump will cause premature damage to the ViaAqua® Pond Pump.**

**Recommended routine maintenance: every 30 days.**

1. Disconnect the pump from the G.F.C.I. (Ground Fault Circuit Interrupter) power supply prior to removing the pump from the water.
2. Open both, front and back clasps.
3. Remove the pump from the main pre-filter.
4. Clean the main and additional pre-filter.
5. Remove the impeller well cover.
6. Once the impeller well cover is removed, slide both the impeller and shaft out of the main body of the pump, and clean it well.
7. Verify the impeller is free of all dirt and debris.
8. *Note: Do not use any soap or detergent during cleaning.*
9. Once the impeller and shaft are cleaned, use a small brush to clean inside the motor housing.
10. Place the impeller back into the pump.
11. Reassemble above parts and your ViaAqua® Pond Pump is ready to use. *Note: All washer and bushing must be reassembled properly. Failure to do so will cause permanent damage to the pump.*
12. Insert the pump back to the main pre-filter. Attach additional pre-filter and start the ViaAqua® Pond Pump.

## **LIMITED WARRANTY**

Commodity Axis, Inc.® warrants that the ViaAqua® Pond Pump is free from defects for a period of one year from the initial date of purchase shown on the original cash register receipt. Commodity Axis, Inc.® disclaim all other warranties, express or implied, including but not limited to any implied warranties of merchantability and/or fitness for a particular purpose. Although this limited warranty gives you specific rights, you may have other rights which vary from state to state. This warranty is void if the failure is due to misuse, tampering, negligence, abuse, accident and/or submersion, a failure to properly install, maintain, clean, prefilter, reassemble, and/or use the ViaAqua® Pond Pump with a Ground Fault Circuit Interrupter (G.F.C.I.).

## **CONSUMER REMEDIES**

Commodity Axis, Inc.'s entire liability and your sole and exclusive remedy shall be either repair or replacement of the ViaAqua® Pond Pump only if you return the defective unit directly to Commodity Axis, Inc.® with the original receipt in its original box along with fifteen dollars (\$15.00) for shipping and handling. Do not send the ViaAqua® Pond Pump by insured mail. You may send your returns or replacements by UPS if requiring a signature upon arrival. Any replaced unit will be warranted for the remaining time of the original warranty period. In no event shall any shipping charges be reimbursed. In no event will Commodity Axis, Inc.® be liable for any consequential or incidental damages, including but not limited to lost sea life, personal injury, property damage, equipment damage, lost profits, lost wages, lost savings, lost income, etc., arising out of the use of the ViaAqua® Pond Pump. Some states do not allow for the limitation or exclusion of liability for incidental or consequential damages, so the above exclusion may not apply to you.

# REGISTRATION CARD

## ONE (1) YEAR WARRANTY

Name		Date
Address		
City	State	Zip Code
Country	Home Phone	
Cell Phone	Email	
Date of Purchase	Seller (Retail Name)	
Seller's Location		Phone

\*Affix a copy of your original purchase receipt here. Please mail warranty card and proof of purchase within 15 days of purchase to:

**Commodity Axis® Inc., 300 South Lewis Rd. Unit J. Camarillo CA 93012**

IMPORTANT: Please make a copy of this warranty card and retain it for your records. Warranty policy is subject to change without notice.



**COMMODITYAXIS®**  
C O M M O D I T Y   A X I S   I N C

*Bringing Products to Life*  
300 South Lewis Rd. Unit J. Camarillo CA 93012  
Fax: (888) 989 0878  
[www.ViaAquaOceanpure.com](http://www.ViaAquaOceanpure.com)